

Kaplan International

Sydney Manly



Welcome to Kaplan International Sydney Manly. The college is situated right on the beachfront in the idyllic surroundings of Manly, Sydney's favourite beach resort.

With 15 classrooms over 3 floors and great balcony spaces for students to enjoy the stunning views of Manly Beach, you couldn't ask for a better study location. All classrooms are modern and air-conditioned with all the equipment you will need for effective learning.

Other facilities include a multimedia library where students can access a variety of online and audio-visual resources, a spacious student lounge leading on to the large balcony and of course step outside the door and you are on the beach!



Kaplan International Sydney Manly



Manly

Kaplan International Sydney Manly

30-32 South Steyne
Manly NSW 2095
Australia

Kaplan International (Manly) Pty Ltd., ABN 93 098 348 844



Kaplan International English in Australia is endorsed by the National ELT Accreditation Scheme (NEAS).



Kaplan International English in Australia is a member of English Australia.

College Facilities

Classrooms

There are 15 large and comfortable classrooms in total. All classrooms are fitted with desks, chairs and a white board. CD players and interactive whiteboards are available for lessons.

Study centre/library

The college has a total of 20 computers for student use.

All of the computers have software for guided study as well as free, high speed Internet access and also wireless capability so students can use their own computers almost anywhere in the building.

Sports facilities

The activities co-ordinator can help with organising sports events in nearby public parks. Students can join local gyms for indoor sports and fitness training. The closest gym to the college is a short walk away. A wide range of water sports is available all year round including surfing, sailing and diving. Those who prefer to keep their feet on dry land can enjoy beach volleyball, tennis, golf, climbing and many other pursuits.

Social/activities program

The activities co-ordinator produces a monthly calendar of exciting social activities around Sydney and at places of interest in New South Wales. The college is near to the iconic Sydney Harbour, beautiful National Parks and Taronga Zoo. Manly also offers magnificent restaurants and cafés, pubs and clubs, right near the college, so all bases are covered.

College Timetable

Day timetable (English language courses)

The day timetable includes up to 28 lessons plus 7 K+ sessions per week. Each lesson/session is 45 minutes.

The earliest lesson starts at **08:30**
All lessons are finished by **15:45**

Breaks are at the following times:

10:00 - 10:15 Morning break
11:45 - 12:30 Lunch
14:00 - 14:15 Afternoon break

Lessons are held Monday-Friday and your exact timetable will depend on chosen course/location. Please note that you could be allocated your core lessons in the morning or afternoon.

Evening timetable

16:15 - 18:15 Lessons
18:15 - 18:30 Break
18:30 - 20:30 Lessons

Your first day

On the first day of your course you need to report to reception on level 2 at Kaplan International Sydney Manly at 8:30am.

Your first day will be a Monday unless there is a designated holiday on the Monday – in which case your first day will be on the Tuesday.

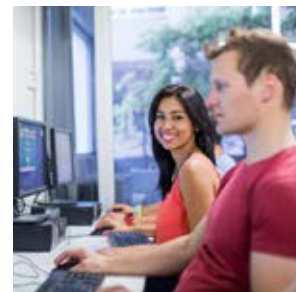
Your course will begin with an all-day introduction which will include:

- Registration and creation of a student ID card
- Receive a student handbook
- Introduction to the college
- A placement test to determine your English level
- Information about the college and college activities
- A walk around the area to show you the local amenities
- Receiving a timetable showing your schedule, classroom and teachers
- A tour of the college and Study Centre
- Meeting the college staff and creating your Internet account

Students will be assigned to the most appropriate class for their level of English. On the first day, all students will need to bring all their Kaplan International documents, passport, a passport-sized photo, an English dictionary and a pen and paper for note-taking purposes.



Classroom



Study centre/library

Local Information

Transport - buses and ferries

Weekly passes can be purchased which can save you time and money. The college is close to the Manly Wharf Ferry Terminal and numerous bus stops.

Banks and Post Office

There are many banks in the Manly area for you to choose from. Always remember to change money and cheques in banks. There is also a post office in Manly and post office boxes (red for regular post or yellow for express post) located on many street corners.

Restaurants and cafés

There are many different restaurants and cafés located right underneath the college or along the Corso.

Department stores and supermarkets

There are supermarkets and shops located within walking distance of the college. There is a Coles supermarket just around the corner from the college. Department stores are located in the nearest big shopping mall (Warringah Mall), 10-15 minutes by bus from the college.

Telephone and Internet

You can access Internet and e-mail from the computer rooms. There is a public telephone approximately 2 minutes' walk from the college. Students are advised to purchase a phone card for long distance calls and to call on weekends and evenings as call rates are cheaper then.

Places of worship

There are places of worship of all religions and faiths close to the college. You can get more information about local religious institutions from the staff at reception.

Cost of Living

Approximate prices in AUD

Food and drink

Sandwiches:	\$6.00 - \$9.00
Pizza/Pasta:	\$7.00 - \$10.00
Coffee:	\$2.00 - \$3.50
Tea:	\$2.00
Pub meal:	\$14.00

Tickets

Bus:	
One-way:	\$2.20 - \$3.00
1-week bus pass:	\$32.00 - \$40.00
10 rides only:	\$14.40 - \$32.00
Travel pass (bus, train ferry):	
1-week pass:	\$35.00 - \$43.00



Manly Beach



North Head



Cafés and restaurants



Catch a Ferry to and from Manly

Sample Activities Schedule

Please note that this is a sample program and activities may change. See a current activities schedule at: www.kaplaninternational.com

Week one

Monday	Meet the new students and have a beer at The Wharf Bar
Tuesday	Tour of Sydney
Wednesday	Inter-college Football Competition
Thursday	Walk to North Head
Friday	Surfing lessons on Manly Beach
Saturday	Visit Port Stevens + Dolphin Cruise

Week two

Monday	Conversation Club
Tuesday	Learn to throw a boomerang
Wednesday	Beach Volleyball
Thursday	Movie Club
Friday	Surfing lessons at Manly Beach
Saturday	Weekend trip to the Blue Mountains

Transfer Information



View from Kaplan International Manly

Kaplan transfers

Students should book their flights according to the starting date of their specific program. Students must arrive on Saturday or Sunday prior to their course start date. Students must provide their agent or Kaplan International with exact flight details - airline, flight number, arrival date and time. Students must provide Kaplan International with their flight details no later than two weeks before their arrival.

A Kaplan International representative meets our students at the airport and transports them directly to their accommodation. After exiting from Australian customs proceed to the arrivals area and look out for the Kaplan International representative, who will meet you at the exit gate for your flight. If you cannot find the representative then meet at "The Meeting Point" area (there is a sign which says "The Meeting Point").

If necessary, you can also call the Kaplan International Sydney Manly Emergency mobile phone number:

+61 (0)419 483 711

Independent transfers

Taxi

There is a taxi rank outside the international flights terminal building. A taxi journey to the host family will cost approximately AUD 60 - AUD 80 depending on location of your accommodation.

Train

From the Domestic Terminal a one way train ticket will cost AUD 16.40 or AUD 17.20 from the International Terminal to Circular Quay, Town Hall or Central Station, where you can catch a connecting bus, train or ferry. Journey time is approximately 30 minutes.